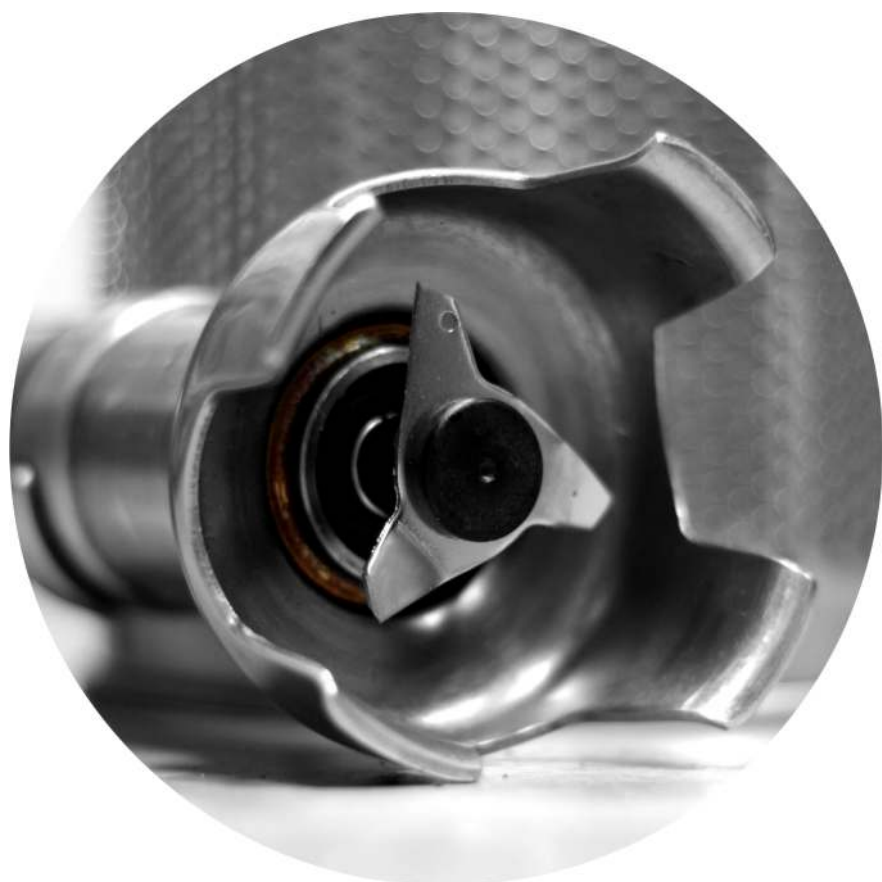




OBRÓBKA MECHANICZNA

Części zamienne do urządzeń:
CZĘŚCI UNIWERSALNE



GASTROPARTS Sp. J.

Klonowica 37
87-100 Toruń
tel. +48 56 657 00 68
fax +48 56 657 00 67
gastroparts@gastroparts.pl



universal parts

ball bearings

deep-groove ball bearings 2RS



Pos.	Part no.	spindle ø (mm)	ext. ø (mm)	B (mm)	type
1	523503	5	16	5	DIN 625 2RS
2	523504	6	19	6	DIN 626 2RS
3	523505	7	22	7	DIN 627 2RS
4	523501	8	22	7	DIN 608 2RS
5	523502	9	24	7	DIN 609 2RS
6	523506	9	26	8	DIN 629 2RS
7	523507	10	26	8	DIN 6000 2RS
8	523508	10	30	9	DIN 6200 2RS
9	505011	10	30	9	DIN 6200 2RS
10	523534	12	28	8	DIN 6001 2RS
11	523509	12	32	10	DIN 6201 2RS
12	523546	12	32	16	DIN 3201 2RS
13	523011	15	32	9	DIN 6002 2RS
14	523510	15	35	11	DIN 6202 2RS
15	523526	15	42	13	DIN 6302 2RS
16	523551	17	35	10	DIN 6003 2RS

Pos.	Part no.	spindle ø (mm)	ext. ø (mm)	B (mm)	type
17	523511	17	40	12	DIN 6203 2RS
18	523516	17	47	14	DIN 6303 2RS
19	523522	20	42	12	DIN 6004 2RS
20	523512	20	47	14	DIN 6204 2RS
21	697116	20	47	20,6	DIN 3204 2RS
22	523517	20	52	15	DIN 6304 2RS
23	692033	25	47	12	DIN 6005 2RS
24	523525	25	47	12	DIN 6005 2RS
25	523513	25	52	15	DIN 6205 2RS
26	523518	25	62	17	DIN 6305 2RS
27	523541	30	55	16	DIN 6006 2RS
28	523524	30	62	16	DIN 6206 2RS
29	523528	35	62	14	DIN 6007 2RS
30	523542	40	68	15	DIN 6008 2RS
31	523515	40	80	30	DIN 5208 2RS

flange bearings



Pos.	Part no.	type	spindle ø (mm)	LA (mm)
1	693112	UCF204	20	64
2	697278	UCF205	25	70

Pos.	Part no.	type	spindle ø (mm)	LA (mm)
3	697279	UCF206	30	83

thrust ball bearings



Pos.	Part no.	spindle ø (mm)	ext. ø (mm)	B (mm)	type
1	523000	12	26	9	51101
2	523520	15	28	9	51102
3	523547	15	32	12	51202
4	514042	17	35	12	51203
5	523537	20	35	10	51104

Pos.	Part no.	spindle ø (mm)	ext. ø (mm)	B (mm)	type
6	523536	20	40	14	51204
7	523523	25	42	11	51105
8	523529	25	47	15	51205
9	523533	30	47	11	51106
10	523532	30	52	16	51206

drive belts
poly-V belts



Pos.	Part no.	profile	L (mm)	B (mm)	grooves
1	693269	140	355	14	6
2	698227	J	483	18,7	8
3	693140	J	1168	30	14
4	697612	TB2	266	16	8
5	697613	TB2	295	16	8
6	697280	TB2	310	16	8
7	697615	TB2	310	20	10
8	698217	TB2	330	14	7
9	697367	TB2	330	16	8
10	697616	TB2	345	16	8
11	698219	TB2	360	16	8
12	697617	TB2	360	20	10
13	697284	TB2	380	16	8
14	698220	TB2	380	20	10
15	697699	TB2	400	16	8
16	698215	TB2	400	20	10
17	697618	TB2	400	24	12
18	697619	TB2	430	16	8
19	698126	TB2	430	20	10
20	698213	TB2	430	22	11
21	698156	TB2	430	28	14
22	698216	TB2	480	20	10
23	698221	TB2	480	22	11
24	697620	TB2	510	20	10
25	698222	TB2	526	12	6
26	697621	TB2	526	20	10

Pos.	Part no.	profile	L (mm)	B (mm)	grooves
27	693939	TB2	630	12	6
28	698000	TB2	630	24	12
29	698223	TB2	660	12	6
30	697622	TB2	675	16	8
31	697623	TB2	675	24	12
32	698157	TB2	725	24	12
33	697624	TB2	770	20	10
34	698224	TB2	1186	14	7
35	697625	TB2.34	356	37	16
36	697626	TB2.34	381	21	8
37	697627	TB2.34	406	26	9
38	697628	TB2.34	406	40	17
39	698225	TB2.34	432	14	6
40	698226	TB2.34	432	23,4	10
41	697629	TB2.34	457	24	9
42	698206	TB2.34	457	28	12
43	697630	TB2.34	483	24	10
44	697631	TB2.34	483	28	12
45	697632	TB2.34	508	24	10
46	697633	TB2.34	559	23	9
47	697634	TB2.34	559	30	13
48	697635	TB2.34	559	38	16
49	697636	TB2.34	610	19	7
50	697637	TB2.34	660	19	7
51	697638	TB2.34	711	19	7
52	697639	TB2.34	711	28	12

round belts



Pos.	Part no.	L (mm)	ø (mm)
1	693701	540	8
2	693873	560	8
3	693874	600	8
4	693705	620	8
5	693703	635	8
6	691231	640	8
7	693700	645	8

Pos.	Part no.	L (mm)	ø (mm)
8	693843	680	8
9	695277	720	6
10	691232	730	8
11	694259	750	8
12	693875	784	8
13	695278	830	6
14	693876	860	8

Pos.	Part no.	L (mm)	ø (mm)
15	693704	884	8
16	693702	895	8
17	693877	920	8
18	695298	940	6
19	695399	950	7
20	693878	950	8
21	695299	1280	6

toothed belts



Pos.	Part no.	profile	L (mm)	B (mm)	CODE
1	691427		160	3	6G16
2	697696	L	210	10	210L100
3	697698	L	240	13	240L050
4	504778	T10	610	16	
5	697691	XL	130	10	130XL037

Pos.	Part no.	profile	L (mm)	B (mm)	CODE
6	697692	XL	140	10	140XL037
7	697693	XL	190	10	190XL037
8	697694	XL	200	10	200XL037
9	697695	XL	210	10	210XL037
10	697697	XL	220	10	220XL037

V-belts



Pos.	Part no.	CODE	belt width (mm)	L (mm)	H (mm)	profile
1	697641		5	260	3	6Y
2	697642		6	270	4	6Y
3	697643		6	280	4	6Y
4	697648		6	339	4	6Y
5	697650		6	360	4	6Y
6	697655		6	450	4	6Y
7	697657		6	500	4	6Y
8	697659		6	580	4	6Y
9	697660		6	600	4	6Y
10	697690	A18	13	457	8	A
11	695163	A24	13	610	8	A
12	695389	A26	13	660	8	A
13	695164	A29	13	737	8	A
14	697071	A32	13	813	8	A
15	697072	A42	13	1067	8	A
16	697073	A43	13	1092	8	A
17	697074	A49	13	1250	8	A
18	697075	A52	13	1320	8	A
19	697076	A56	13	1422	8	A
20	691963	AX40	13	1050	8	
21	691635	AX63	13	1655	8	AX
22	697743	SPA 732	12,7	750	10	SPA
23	697664	T12 1/2	8	315	5	8T
24	697665	T14	8	355	5	8T
25	697666	T14 3/4	8	375	5	8T
26	697667	T15 3/4	8	400	5	8T
27	697668	T16 3/4	8	410	5	8T
28	697669	T17	8	430	5	8T
29	697670	T17 3/4	8	450	5	8T
30	697671	T18 3/4	8	475	5	8T
31	697672	T20 3/4	8	530	5	8T
32	697673	T22	8	560	5	8T
33	697674	T23	8	580	5	8T

Pos.	Part no.	CODE	belt width (mm)	L (mm)	H (mm)	profile
34	697675	T24 3/4	8	630	5	8T
35	697676	T26 1/2	8	630	5	8T
36	697677	T28	8	710	5	8T
37	697644	Y324	6	300	4	6Y
38	697645	Y343	6	320	4	6Y
39	697646	Y352	6	330	4	6Y
40	697647	Y361	6	335	4	6Y
41	697649	Y381	6	352	4	6Y
42	697651	Y394	6	372	4	6Y
43	697652	Y411	6	380	4	6Y
44	697653	Y425	6	400	4	6Y
45	697654	Y441	6	425	4	6Y
46	697656	Y495	6	475	4	6Y
47	697658	Y588	6	565	4	6Y
48	697661	Y665	6	640	4	6Y
49	697662	Y700	6	675	4	6Y
50	697663	Y714	6	695	4	6Y
51	697678	Z14	10	355	6	Z
52	697680	Z15 3/4	10	400	6	Z
53	697681	Z16 3/4	10	424	6	Z
54	697682	Z17 1/4	10	438	6	Z
55	697683	Z18	10	460	6	Z
56	697684	Z18 3/4	10	475	6	Z
57	697685	Z19 3/4	10	500	6	Z
58	697686	Z20 1/2	10	520	6	Z
59	697687	Z21 1/4	10	540	6	Z
60	693262	Z22	10	560	6	Z
61	697688	Z23 3/4	10	600	6	Z
62	691224	Z25		635	6	Z
63	697689	Z27	10	685	6	Z
64	691225	Z28		710	6	Z
65	693400	Z36	10	915	6	Z

feet



Pos.	Part no.	TS	th.le (mm)	ø (mm)	H (mm)
1	695612	M8	20	29	11

Pos.	Part no.	TS	th.le (mm)	ø (mm)	H (mm)
2	691122	M8	24	38	13



Pos.	Part no.	TS	th.le (mm)	ø (mm)	H (mm)	Qty (pc)
1	691652	M10	23	25	29	1
2	700875	M10	25	24	8	1
3	690832	M10	25	24	8	10
4	697331	M10	32	34	12	1

Pos.	Part no.	TS	th.le (mm)	ø (mm)	H (mm)	Qty (pc)
5	690833	M10	45	24	8	10
6	700710	M12	55	38	15	1
7	696094	M5	10	15	10	1



Pos.	Part no.	TS	th.le (mm)	ø (mm)	H (mm)	Qty (pc)
8	691264	M6	16	25	6	1
9	693947	M8	15	26	8	1
10	691344	M8	20	23	12	1
11	513284	M8	20	30	12	1

Pos.	Part no.	TS	th.le (mm)	ø (mm)	H (mm)	Qty (pc)
12	700873	M8	25	24	8	1
13	690830	M8	25	24	8	10
14	691118	M8	25	25	7	1



Pos.	Part no.	TS	th.le (mm)	ø (mm)	H (mm)	Qty (pc)
15	700874	M8	45	24	8	1

Pos.	Part no.	TS	th.le (mm)	ø (mm)	H (mm)	Qty (pc)
16	690831	M8	45	24	8	10



Pos.	Part no.	TS	th.le (mm)	ø (mm)	H (mm)
1	693791	M5	10	36	25
2	697387	M5	10	36	27
3	697757	M6	9	37	27
4	697773	M6	12	47	35

Pos.	Part no.	TS	th.le (mm)	ø (mm)	H (mm)
5	697383	M8	10	47	46
6	527255	M8	12	47	45
7	802136	M8	15	47	40

shaft gaskets

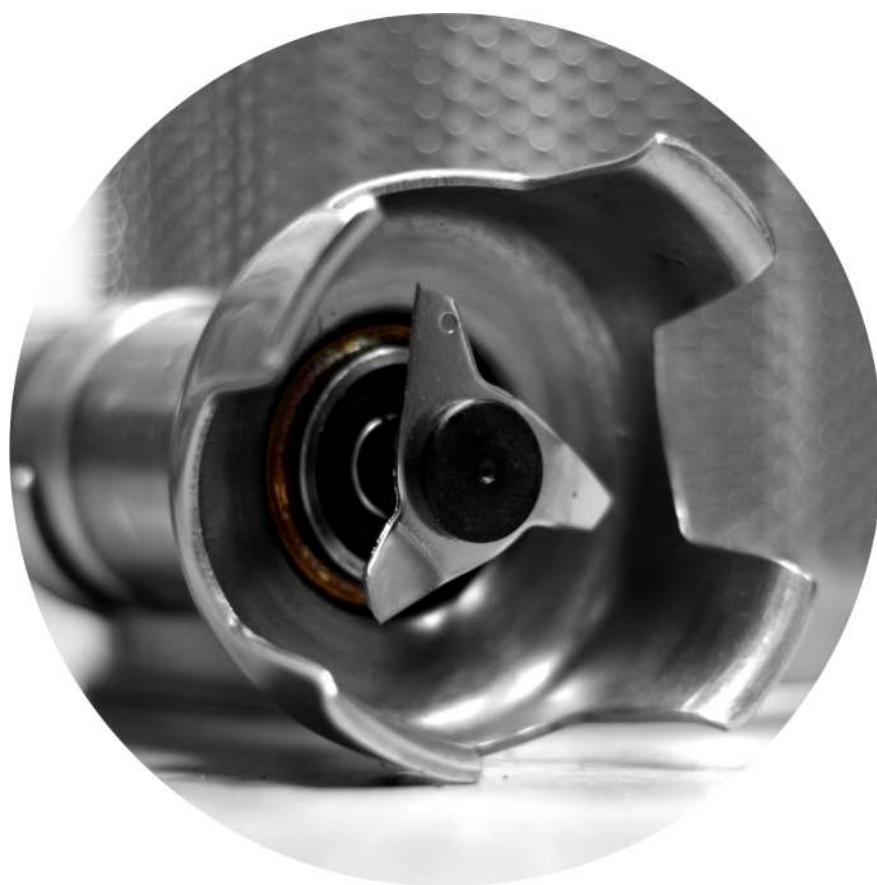


Pos.	Part no.	int. ø (mm)	ext. ø (mm)	t (mm)
1	511170	7	22	7
2	697407	8	18	6
3	527291	11	22	8
4	698239	11,91	18,24	5
5	698211	15	24	5
6	698116	15	30	7
7	691049	17	28	7
8	516246	17	35	7
9	697121	17	40	7

Pos.	Part no.	int. ø (mm)	ext. ø (mm)	t (mm)
10	697475	20	30	5
11	698001	20	35	7
12	698002	25	40	7
13	698117	25	47	7
14	698207	30	40	7
15	698123	30	62	7
16	698121	35	50	5
17	698122	40	62	7



www.gastroparts.pl



GASTROPARTS Sp. J.

Klonowica 37
87-100 Toruń
tel. +48 56 657 00 68
fax +48 56 657 00 67
gastroparts@gastroparts.pl

